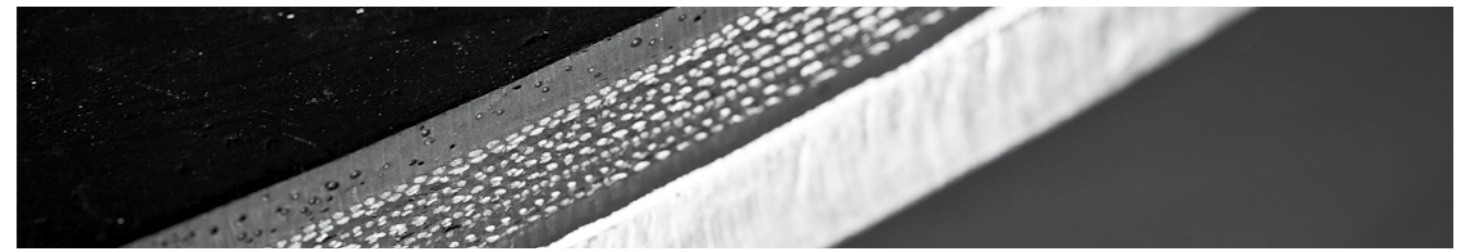




seiris
EXPANSION JOINTS

RUBBER EXPANSION JOINTS



TYPES OF EXPANSION JOINTS

CIRCULAR EXPANSION JOINTS

Single or multiple ply. Diametre ranging from 25 to 3000 mm

SPOOL TYPE

Single convolution



Double convolution



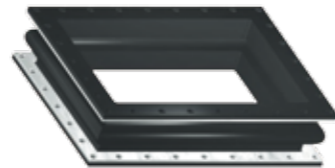
Triple convolution



Complete tied



Rectangular



SPECIAL DESIGNS

Pressured Balance



offset



EXC - Type



CONC - Type



ELBOW - TYPE



SELECTION CRITERIA

- Temperature resistance
- Resistance to corrosion
- Forming capacity
- Mechanical characteristics
- Flexibility

MAIN ADVANTAGES

- Medium to high pressure resistance
- Flexibility
- Low spring rates
- Low maintenance
- Large cycle life

MATERIALS

Rubber: Natural rubber (IR), Neoprene (CR), EPDM (EP), Silicone (SI), Butyl (IIR), Chlorobutyl (CIIR), Nitrile (NBR), SBR, Hypalon (CSM) and Viton (FKM)

Flanges: S275JR, S355J2G3, AISI 304, 316, 316L, aluminium

Control rods & fasteners: A193 Gr. B7 and A194 Cl. 2H

STANDARDS

Rubber Expansion Joints are designed, manufactured and tested according to Internationally Recognized Codes and Standards :

- F.S.A. (Fluid Sealing Association)
- ASTM

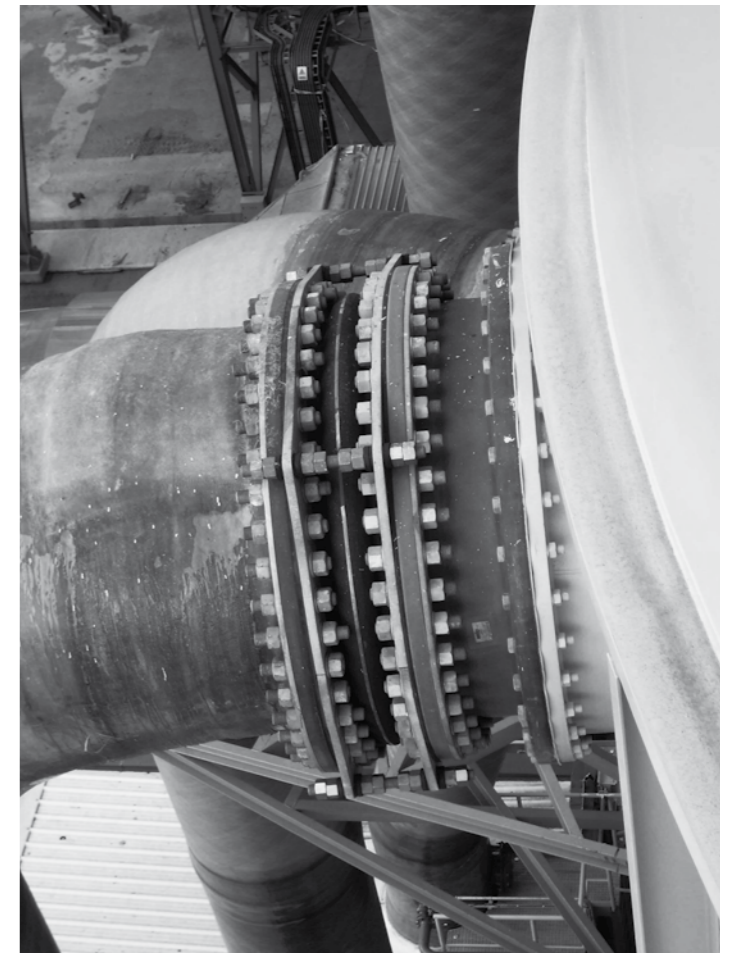
QUALITY CONTROL

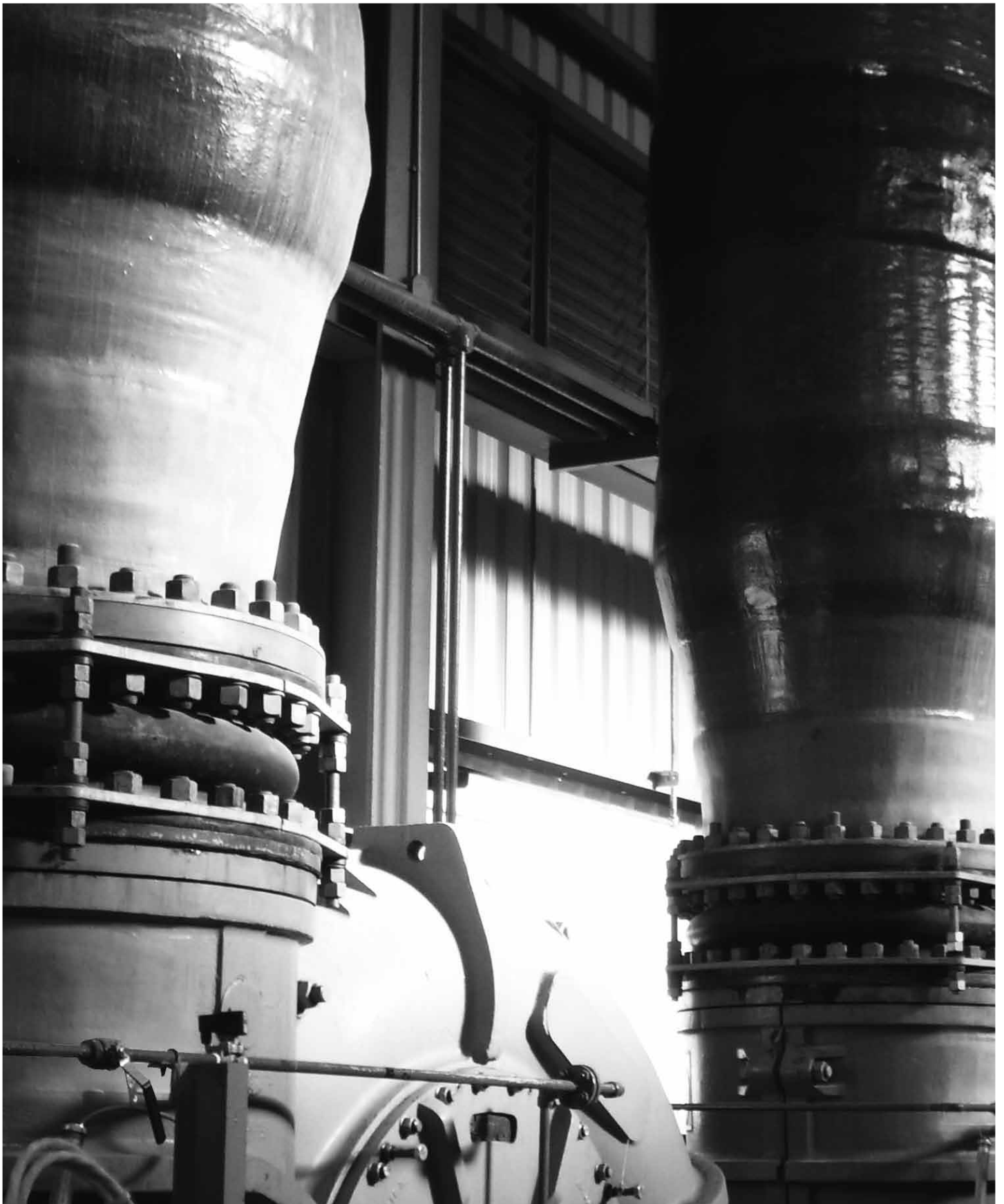
A WIDE RANGE OF TESTS CAN BE CARRIED OUT ON CUSTOMERS REQUEST

- Hydraulic pressure test
- Vacuum test
- Material analysis
- Spring rates
- Movement test
- Dimensional inspections

SERVICES

- Technical assistance for the design of piping systems
- On site inspection
- Measurements
- Training and seminars





seiris
EXPANSION JOINTS

Chemin de la julienne - 91830 LE COUDRAY-MONTCEAUX - FRANCE
Tél. : +33 (0) 1 69 01 20 39 - Fax : +33 (0) 1 69 01 33 33
www.seiris-sa.com - info@seiris-sa.com
